

-Rapid Fit Motor Mounts

Specification

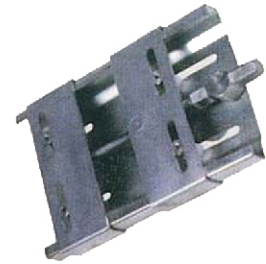
The fastest and most economical method of securing motors to machine beds. The five sizes are manufactured from galvanised steel and they can accommodate motor frame sizes 63 to 180. They have four slotted holes for fastening the base to the foundation.

Alignment

The pressed top plate is designed to slide over the base plate preventing vibration and noise whilst ensuring continuous belt alignment. Belts are tensioned by adjusting a single screw.

Motor Mounting

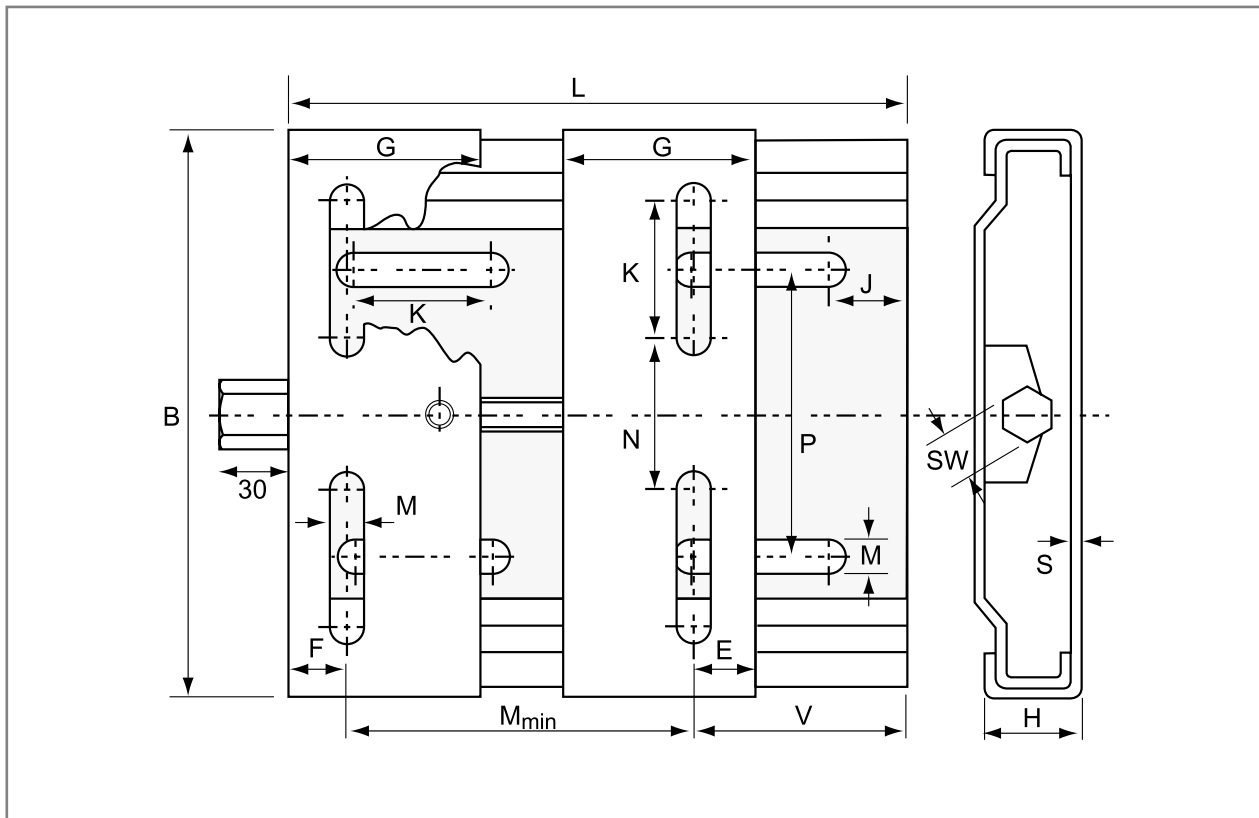
The motor is bolted to the two piece top plate which accommodates a wide range of motors. Centre distance adjustments can be made without the need to loosen the motor bolts.



Dimensions for Sizes 210 to 490 Rapid Fit Motor Mount

Type	Frame Size	L	B	H	M _{min}	G	E	J	K	M	N	P	SW	S
210	63 - 80	210	195	33	100	70	20	25	50.0	10.5	43	98	19	3
270	63 - 100	270	195	33	100	70	20	25	50.0	10.5	43	98	19	3
340	90 - 132	340	290	39	136	95	27	29	62.5	12.5	90	165	22	4
430	90 - 160	430	290	39	136	95	27	29	62.5	12.5	90	165	22	4
490	160 - 180	490	409	40	110	95	40	30	60.0	15.0	193	142	22	4

SIZE 210 to 490



-Rapid Fit Motor Mounts

Specification

Produced in three sizes for motors from frame size 63 to 225 and manufactured from pressed steel fabrications with four slotted holes for fastening the base to the foundation.

Alignment

The pressed top plate is designed to slide exactly over the mounting rails preventing vibration and noise whilst ensuring continuous belt alignment. Belts are tensioned by adjusting a single screw which is possible whilst the motor is running.

Surface Finish

Stove enamelled finish with zinc plated adjustment screws to prevent corrosion.

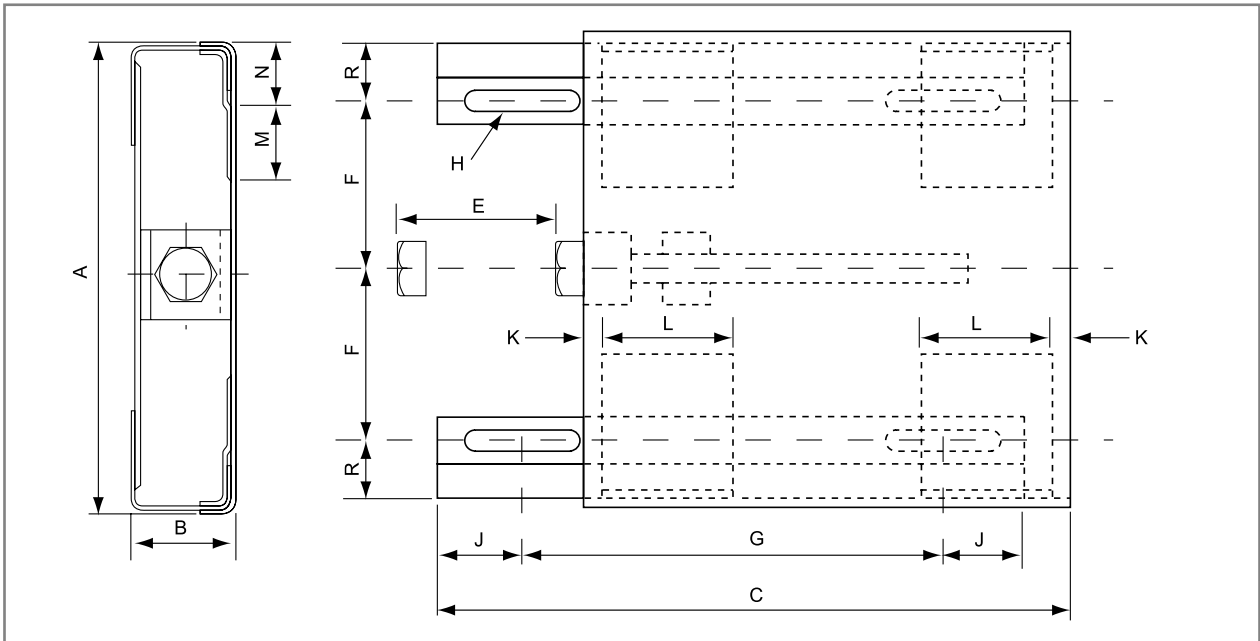
Motor Mounting

The top plate requires drilling to accommodate the required motor mounting bolts. Centre distance adjustments can be made without the need to loosen the motor bolts.

Dimensions for Sizes 0 to B Motor Mounts

Base Ref	Motor Frame Ref	Motor Bolt Holes	A	B	C	D	Movement E	F	G	H	J	K	I	M	N	R	SW	Approx. Weight kg
0	63	7	146	29	225	170	80	55.0	148	9.5 x 25	27	60	50	32	18	15.0	17	1.4
	71	10																
A	80	12	240	55	325	258	100	89.0	215	13 x 51	45	10	70	51	32	28.5	24	5.3
	90S																	
	90L																	
	100S																	
	100L																	
B	112S	15	428	60	578	450	180	172.5	370	17 x 50	51	28	100	98	42	36.0	24	19.0
	112M																	
	132S																	
	132M																	
	160M																	
	160L																	
	180M																	
180L																		
	200M	19	428	60	578	450	180	172.5	370	17 x 50	51	28	100	98	42	36.0	24	19.0
	200L																	
	225S																	
	225M																	
	225M																	

SIZE 0 to B



-Slide Rails

Specification

Covering frame sizes 63 to 225, HLB slide rails are manufactured in galvanised steel with movable positioning blocks for rapid accurate drive alignment.

Alignment

The pressed steel rails are solidly fixed by three securing bolts while the motor is bolted to the rails eradicating vibration and noise whilst ensuring rigid positioning.

Motor Mounting

The motor is bolted to the slide rails and positioned with the aid of adjustment screws. The motor must be stopped and the motor bolts loosened before repositioning.

Dimensions for Sizes 312 to 686 Slide Rails

Base Ref	Overall Length L	Slide Length G ₁	Motor Frame Ref	M x h	l x S	G ₂	a	b	b/2	Ø d	B	H ₁	H ₂	Weight kg
312/6	312	240	63/71	M6 x 19	75 x 6	262	16	280	-	12	40	28	30	1.4
312/8	312	240	80/90	M8 x 27	75 x 6	262	16	280	-	12	40	28	30	1.5
375/6	375	305	63/71	M6 x 19	75 x 6	325	16	343	-	12	40	26	30	1.5
375/8	375	305	80/90	M8 x 27	75 x 6	325	16	343	-	12	40	28	30	1.6
375/10	375	305	100/112	M10 x 32	75 x 6	325	16	343	-	12	40	28	30	1.6
395/8	395	302	80/90	M8 x 28	97 x 8	325	20	355	-	12	50	40	43	3.4
395/10	395	302	100/112	M10 x 35	97 x 8	325	20	355	-	12	50	40	43	3.4
495/8	495	405	80/90	M8 x 29	97 x 8	425	20	455	-	12	50	40	43	4.0
495/10	495	405	100/112/132	M10 x 35	97 x 8	425	20	455	-	12	50	40	43	4.0
495/12	495	405	160	M12 x 49	97 x 8	425	20	455	-	12	50	40	43	4.0
530/10	530	413	132	M10 x 37	119 x 9	442	25	480	-	14	60	50	54	6.4
530/12	530	413	160	M12 x 49	119 x 9	442	25	480	-	14	60	50	54	6.4
630/10	630	515	132	M10 x 37	119 x 9	542	25	580	-	14	60	50	54	8.2
630/12	630	515	160/180	M12 x 45	119 x 9	542	25	580	-	14	60	50	54	8.2
686/12	686	538	160/180	M12 x 43	154 x 12	575	28	630	315	18	75	60	64	12.8
686/16	686	538	200/225	M16 x 62	154 x 12	575	28	630	315	18	75	60	64	12.8

SIZE 312 to 686

